

New Directions
...opening research trajectories

Peter Rogers
Macquarie University

Peter.rogers@mq.edu.au

GFURR Critical Perspectives on Post-Crisis Resilience.
JULY 2015

New Directions in Resilience Research



IDEAS AND EXAMPLES

1. DISASTER RESILIENCE

- Typology and Scale

2. SMARTER CITIES

- Integrating thinking and practice across scales

3. MICRO PROJECTS & INTEGRATED SOLUTIONS

- Integrated design interventions

4. THE ADDED-VALUE OF RESILIENCE AS AN INSTITUTION

- Multiple hits and manipulating the narrative

TYPOLOGIES:

THE SCALE AND FOCUS OF RESILIENCE ACTIVITY

Figure 1. Scale of Resilience Activity



Figure 2. Focus of Resilience Activity



TYOLOGIES:

THE SCALE AND FOCUS OF RESILIENCE ACTIVITY

Figure 1. Scale of Resilience Activity



Figure 2. Focus of Resilience Activity



TYPOLOGIES:

THE SCALE AND FOCUS OF RESILIENCE ACTIVITY

Figure 1. Scale of Resilience Activity



Figure 2. Focus of Resilience Activity



TYPOLOGIES:

THE SCALE AND FOCUS OF RESILIENCE ACTIVITY

Figure 1. Scale of Resilience Activity



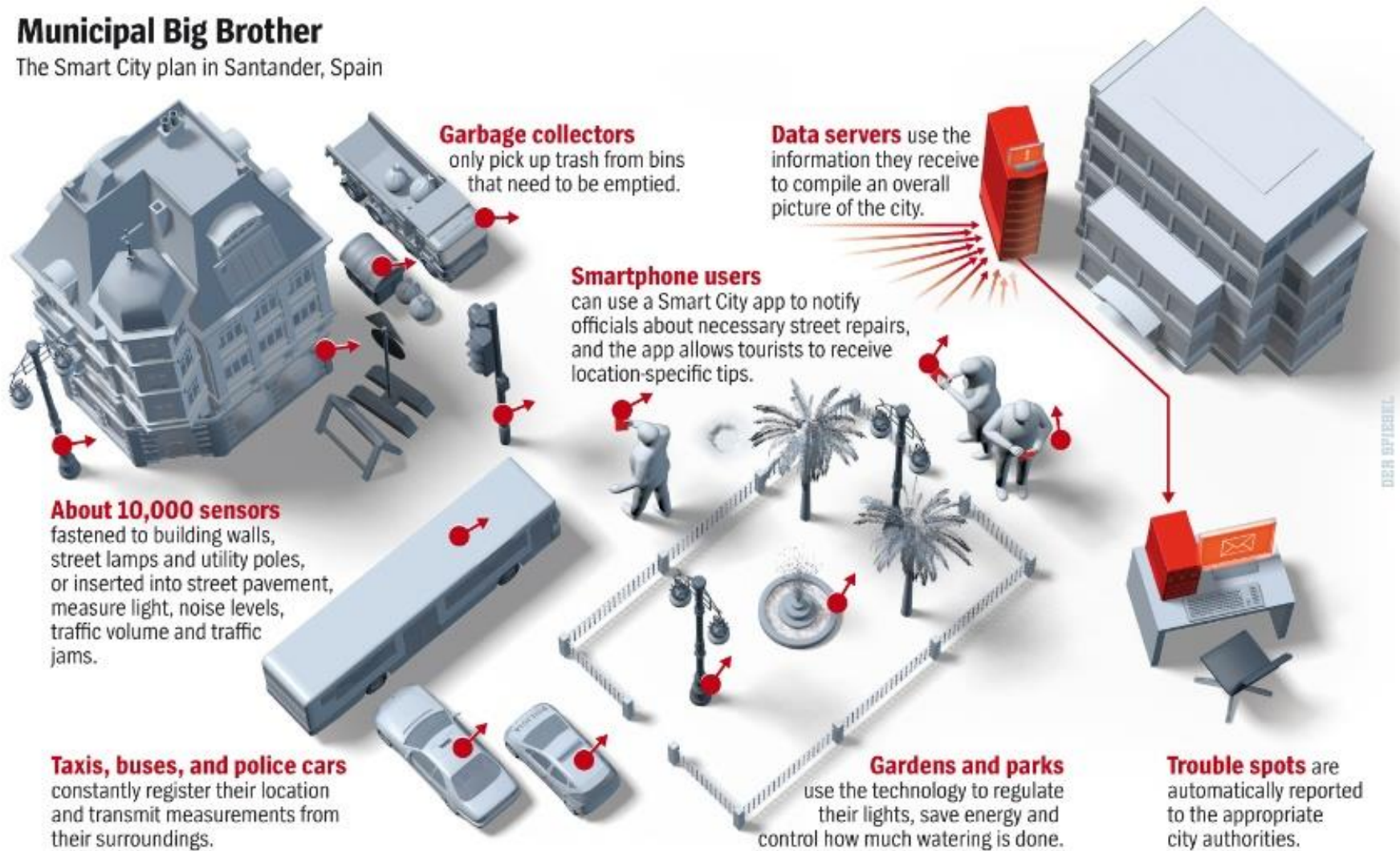
Figure 2. Focus of Resilience Activity

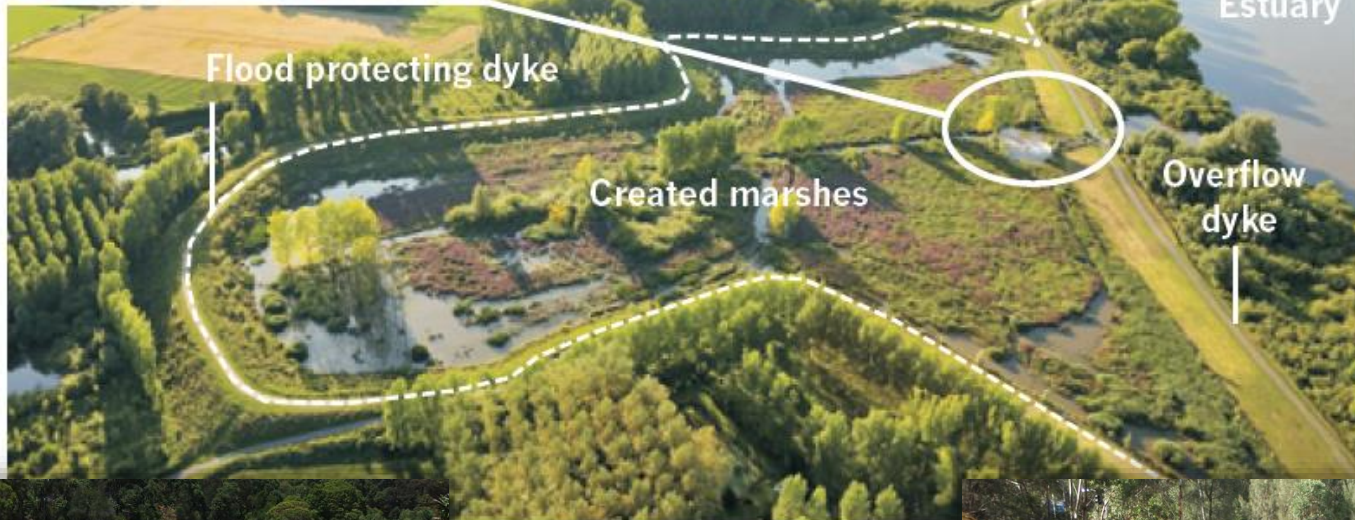


Micro Projects and Integrated Solutions

Municipal Big Brother

The Smart City plan in Santander, Spain





PERMATHENE
Architectural Gabion

TOP
Natural system coastal flood
defense in Belgium

LEFT
Gabions in Sydney park

RIGHT
Revetments in Lane Cove



Y BERMS





📷 The winning \$60m 'Living Breakwaters' design aims to provide a natural buffer around the south shore of Staten Island. Illustration: Scape/Landscape Architecture

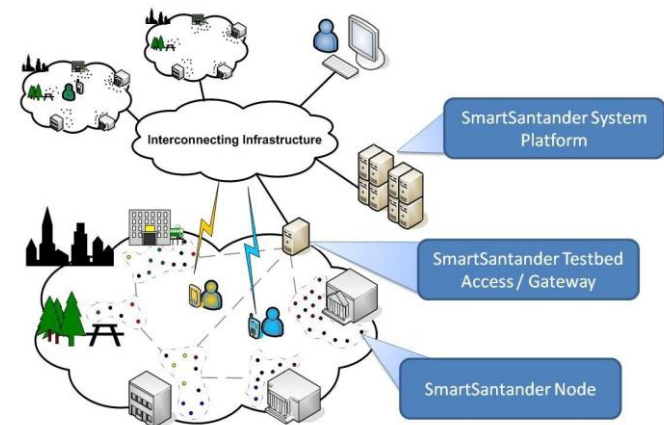
Resources Fuel a City



The Added-Value of Resilience as an Institution

MULTIPLE HITS & MANIPULATING THE NARRATIVE

- **Manipulating the narrative**
 - Participation breeds engagement
 - Hitting the bottom line
 - Maximising investment to value-add ratio
 - Mixed-methods evaluations
- **Subverting the outcomes?**
 - *Connecting behaviour change to political economy?*
 - *Adding value through realigned values?*
 - *Incremental change in citizen-state relationship?*





Global
Resilience
Collaborative



resilience reporter

RESILIENCE STARTS WITH INFORMATION

IS THERE A POINT TO ALL THIS?

- Integrating resilience thinking and practice is possible across scales
- Institutionalised resilience requires creative, collaborative and entrepreneurial skills

SOME CHALLENGES GOING FORWARD?

- Can we:
 - *provide usable evidence of best practice value-add to shape the emergent narrative?*
 - *trip the 'rigidity trap' of system **optimization**?*
- Can we contextualize the evidence within often *negative* policy narratives without losing the *positive* transformative potential when resilience is acted out?

RESOURCES may fuel systems but **PEOPLE** are the key to resilience