



Resilient Cities as Complex Systems

Change, (Dis)Order and Disaster

Peter Rogers

Co-Director Climate Futures
Macquarie University

Peter.rogers@mq.edu.au



Framing Normative Issues in Current Narratives

The three problems for today's panel

1. How are normative issues framed in the current narratives on resilient cities?
2. Do current public policies create a tension between building resiliency in regional versus urban places?
3. Have existing planning and policy approaches to vulnerability and risk addressed normative issues that create social inequities within urban or small town settings?



How are normative issues framed in the current narratives on resilient cities



TERRORISM IF YOU SUSPECT IT REPORT IT

TERORISTS NEED INFORMATION
Observation and surveillance help terrorists learn attacks. Have you seen anything suspicious? Report it to security arrangements?

TERORISTS NEED TRANSPORT
Fuels work in commercial vehicles. Who is taking a taxi or train? Make you suspicious?

TERORISTS NEED TO TRAVEL
Meetings, training and planning can be done online. Can you detect anything suspicious? Report it to security arrangements?

TERORISTS USE COMPUTERS
Do you have anything suspicious? Report it to security arrangements?

TERORISTS NEED COMMUNICATION
International. Do you see anything suspicious? Report it to security arrangements?

CALL 0800 789 321 CONFIDENTIAL ANTI-TERRORIST HOTLINE

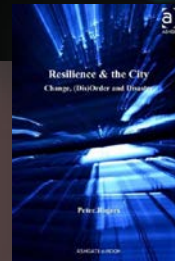
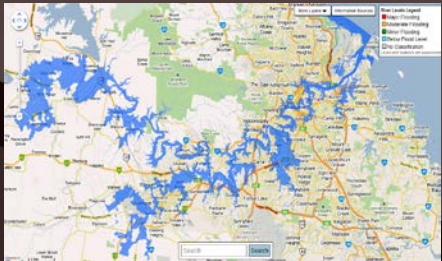
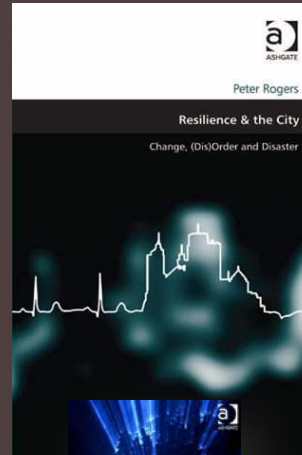
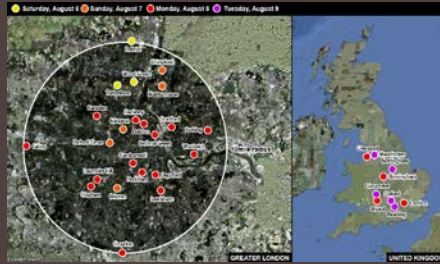


NEW SECURITY CHALLENGES
Series Editor: Stuart Croft

The Everyday Resilience of the City
How Cities Respond to Terrorism and Disaster

Jon Coaffee, David Murakami Wood and Peter Rogers

How are normative issues framed in the current narratives on resilient cities



TYPOLOGIES: The Scale and Focus of Resilience Activity

Figure 1. Scale of Resilience Activity



Figure 2. Focus of Resilience Activity



TYPOLOGIES: The Scale and Focus of Resilience Activity

Figure 1. Scale of Resilience Activity



Figure 2. Focus of Resilience Activity



TYPOLOGIES: The Scale and Focus of Resilience Activity

Figure 1. Scale of Resilience Activity



Figure 2. Focus of Resilience Activity



TYPOLOGIES: The Scale and Focus of Resilience Activity

Figure 1. Scale of Resilience Activity



Figure 2. Focus of Resilience Activity



Making the connections

- RESILIENCE in practice has often been understood as:
 - An 'all-hazards' approach to disaster management
- RESILIENCE activity has often been focussed on:
 - the skills of emergency services
 - the risk awareness of the public
 - the attempt to bounce-back and absorb stress before, during and after crisis events
- RESILIENCE THINKING has begun to emphasise:
 - Complex and interdependent systems
 - Pre-emptive actions embedded in local context
 - A negotiated interplay between capability and capacity
 - An ongoing cycle of reflexive learning

Two-sides to urban resilience in practice

NEGATIVE

- Top-down (command & control)
- Risk averse
- Standard-driven conformance
- Linear Path Dependency
- Quantitative evaluation
- Contextually specific
- Short-term

OUTCOME

- Embeds maladaptation based on quantitative standards of optimal efficiency within a static equilibrium

POSITIVE

- Two-way (coordination)
- Risk aware
- Flexible collaboration
- Dynamic Reflexive Learning
- Mixed-methods evaluation
- Contextually sensitive
- Long-term

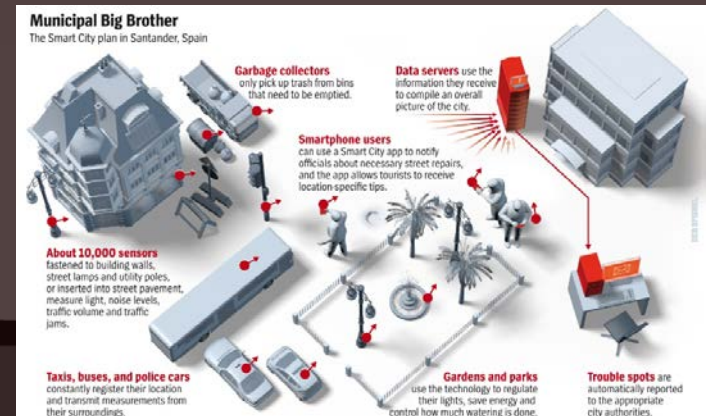
OUTCOME

- Embeds adaptation based on contextual and collaborative experimentation across dynamic systems

How to address the normative issues that create social inequities?

Revising URBAN Resilience

- INSTITUTIONALISED resilience?
 - We can always do better
 - We can always know more
 - We can always learn from our mistakes
- Key themes?
 - Emergence
 - Collaboration
 - Reflexivity
 - Integration



Revising URBAN Resilience

- INSTITUTIONALISED resilience?
 - We can always do better
 - We can always know more
 - We can always learn from our mistakes
- Key themes?
 - Emergence
 - Collaboration
 - Reflexivity
 - Integration



Resilience...

an emergent property of complex systems?

URBAN Resilience...

a contextually embedded and dynamic interplay between the capabilities and capacities of both actors and systems?